

UNSHIELDED SMD POWER INDUCTORS / FPI TYPE

FEATURES

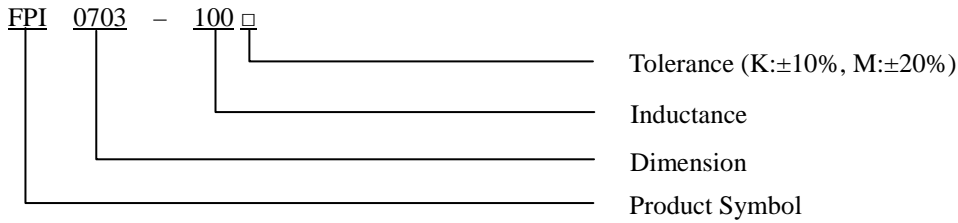
- ◆ Silver Plated Type
- ◆ High power and high saturation
- ◆ Ideal inductors for DC/DC conversion



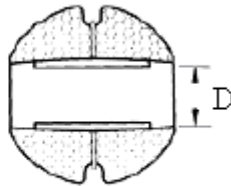
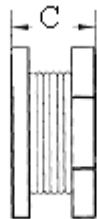
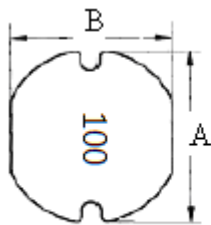
APPLICATIONS

- ◆ Power supply for VTRs.
- ◆ Portable communication equipment.
- ◆ Notebook PCs.
- ◆ LCD televisions.
- ◆ DC/DC converters, etc.

ORDERING CODE



DIMENSIONS (UNIT: mm)



A	7.8 ± 0.3	m/m
B	7.0 ± 0.3	m/m
C	3.5 ± 0.3	m/m
D	2.1 (REF)	m/m

UNSHIELDED SMD POWER INDUCTORS / FPI TYPE

ELECTRICAL CHARACTERISTICS FOR FPI0703

Part No.	Inductance (uH)	RDC (Ω)	IDC (A)
FPI0703-1R0 □	1.0	0.020	11.00
FPI0703-1R5 □	1.5	0.025	8.00
FPI0703-2R2 □	2.2	0.030	6.50
FPI0703-3R3 □	3.3	0.040	5.60
FPI0703-4R7 □	4.7	0.045	4.50
FPI0703-5R6 □	5.6	0.050	4.00
FPI0703-6R8 □	6.8	0.065	3.70
FPI0703-100 □	10	0.080	3.40
FPI0703-150 □	15	0.100	3.00
FPI0703-220 □	22	0.130	2.20
FPI0703-330 □	33	0.170	2.00
FPI0703-470 □	47	0.250	1.40
FPI0703-560 □	56	0.300	1.30
FPI0703-680 □	68	0.330	1.20
FPI0703-101 □	100	0.480	0.95
FPI0703-151 □	150	0.750	0.85
FPI0703-181 □	180	1.020	0.80
FPI0703-221 □	220	1.200	0.70
FPI0703-331 □	330	1.500	0.52
FPI0703-471 □	470	2.400	0.42
FPI0703-561 □	560	2.700	0.37
FPI0703-102 □	1000	4.000	0.29

* 100uH 以上 Test Frequency : 1KHZ/1V

* 100uH 以下 Test Frequency : 2.52MHZ/1V

CORE MASTER ENTERPRISE CO., LTD.

<http://www.coremaster.com.tw>

